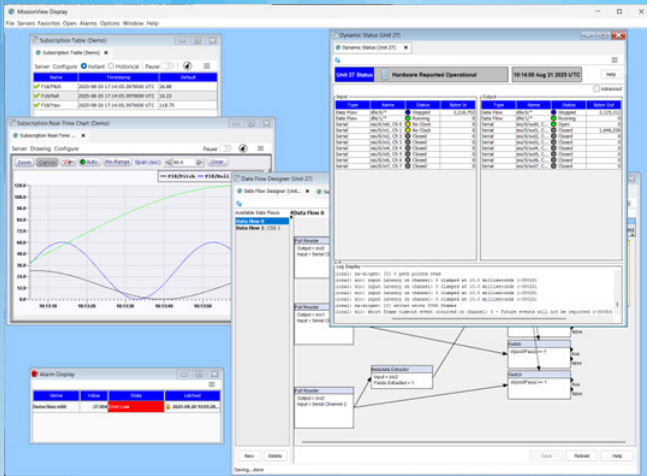


System Management and Data Visualization



Introduction

Having data is one thing; using data is everything. MissionView™ brings your data to life to help you monitor changes, make decisions and then act.

MissionView software provides easy point-and-click configuration, data display, and system management for any NetAcquire system.

With **MissionView Designer**, you can quickly create and configure sophisticated graphic displays that leverage a large, predefined library of real-time charts, meters, gauges, and more.

MissionView Display provides configuration and management functions of one or more NetAcquire servers, including decommutation, real-time processing and derived measurands, and much more. MissionView Display also hosts the customized display screens created by Designer, connecting your work to data. It's easy to conveniently connect any NetAcquire server to display real-time measurement and telemetry data. Other features include live charts, data recording, and data tables.



Custom Displays

- Create custom display screens using an intuitive drag and drop interface to create a rich data visualization
- Supports high data rates
- Display screens connect to real-time data provided by NetAcquire servers
- Send commands from displays to the server to control server features
- Maintain full control over color, sizing, spacing, and alignment
- Configure screen widgets to change color, size and position based on the values of incoming data

Security

MissionView follows strict security guidelines, providing administrator-driven control and lockdown of the application. Application logging provides traceability, and support for centralized logging ensures the application can aid our customer's secure IT demands.

Data Acquisition

- Quickly and easily setup of all kinds of input channels
- Acquire PCM telemetry, Mil-Std-1553, analog, and other signals simultaneously from different sources at different sampling rates.
- The MissionView client/server network interface supports an unlimited number of display stations; it allows deterministic real-time processing on each NetAcquire server prior to display. All low-level details of network input/output, flow control, error detection, and recovery are handled transparently.

User Interface and Management

- Quickly and easily setup of all kinds of input channels; intuitive MissionView operation automatically discovers NetAcquire server capabilities
- Manage multiple windows and multiple NetAcquire servers
- Monitor equipment status, configuration, and control including:
 - Telemetry-over-IP (TMOIP)
 - Simulation
 - BERT
 - Correlating Source Selection (CSS)
 - Data generation
 - Recording/playback
- MissionView can be deployed on Windows, Linux, and macOS.

Data Recording and Playback

- Data recording of any acquired data is delivered in convenient comma separated values (CSV) format with user-configurable formatting.
- Play back recorded data (CSV) to drive historical data through custom screens, tables, charts, and other displays.

Alarms

The alarm subsystem detects when user-configurable alarm conditions are met. Different alarm criteria are available with multiple thresholds and ranges, driven by data from NetAcquire server real-time data updates. Alarm conditions are displayed with configurable text and colors, and time-stamped alarm events are captured to disk in CSV format. Alarms can be set to latch and require explicit operator reset.

Integration with NetAcquire Data Flow

NetAcquire Data Flow Engine integration includes:

- Mathematical, filtering, and analysis functions
- CCSDS processing
- Multi-level embedded decommutation
- User-defined functions and derived parameters either
- Configurable time synchronization and time stamping
- Hundreds of additional capabilities
- Graphical configuration of real-time processing using NetAcquire Data Flow Designer