

## Real-Time Data Display and Recording

### Introduction

Having data is one thing; using data is everything. MissionView™ brings your data to life to help you monitor changes, make decisions and take action. MissionView software provides easy point-and-click configuration, real-time data display, and control for any NetAcquire system.

With **MissionView Designer**, you can quickly create and configure sophisticated graphic displays that leverage a large predefined library of real-time charts, meters, gauges, and more.

**MissionView Display (Base edition)** supports GUI configuration and management functions of one or more NetAcquire servers, including decommutation, real-time processing and derived measurands, and much more.

**MissionView Display (Full edition)** includes viewing and customization for the sophisticated graphics displays created with MissionView Designer. It's easy to conveniently connect any NetAcquire server to display real-time measurement and telemetry data. Other features include data recording and scrolling data display tables.

Like many NetAcquire products, MissionView shatters price/performance benchmarks in the aerospace industry. The MissionView Display (Base edition) is free; advanced capabilities start at \$495.

### Displays

- Easily create an unlimited number of different displays using an intuitive drag and drop interface
- Enjoy powerful data visualization
- Maintain full control over color, sizing, spacing, and alignment
- Configure using flexible real-time dynamics to change color, size, and position based on the values of incoming data
- Drawing and refresh supports high data update rates

#### Gauges:

- Circular gauges (many styles)
- Dials
- Thermometer
- Compass

#### Numeric Display and State Indicators:

- Numeric with configurable digits, radix (decimal, hex, etc.)

- Seven segment
- Bar segment
- Alarm Indicator
- Bar segment
- Alarm Indicator
- Annunciator
- Alarms
- IRIG time

#### Avionics:

- Artificial Horizon
- Rate of Turn
- Heading
- Altimeter
- Fuel
- Tachometer

#### Controls:

- Vertical and horizontal sliders (many styles)
- 2D slider
- Spinner
- Toggle switch
- Multi-position switch
- Pushbutton
- Knob
- Joystick
- Pulldown option list
- Multi-selection list

#### Drawing Objects:

- Text labels with configurable font, size, and color
- Graphics images
- Filled and unfilled rectangles and arbitrary polygons
- Filled and unfilled circles and ovals
- Arcs, splines
- Connectors

#### Others:

- Tanks
- Columns
- Motors
- Pumps
- Fans
- Heat exchanger
- Valves

#### Custom Objects:

- Ability to define custom display objects without programming

# MissionView

## Data Acquisition

- Quickly and easily setup all kinds of input channels
- Acquire PCM telemetry, Mil-Std-1553, analog, and other signals simultaneously from different sources at different sampling rates

The MissionView client/server network interface supports an unlimited number of display stations; it allows deterministic real-time processing on each NetAcquire server prior to display. All low-level details of network input/output, flow control, error detection, and recovery are handled transparently.

## User Interface and Management

- Quickly and easily setup all kinds of input channels; intuitive MissionView operation automatically discovers NetAcquire server capabilities on the network
- Manage multiple windows and multiple NetAcquire servers
- Save, load, and transfer displays and GUI layouts
- Monitor equipment status, configuration, and control including:
  - telemetry-over-IP (TMoIP)
  - data generation
  - simulation
  - recording/playback
  - BERT
  - Correlating Source Selection (CSS)

MissionView can be deployed on any PC-based system including workstations, laptops, embedded smart displays, and rack-mount PCs.

MissionView can be integrated with NetAcquire server access control security and encryption.

Data recording of any acquired data is delivered in convenient comma-delimited ASCII format.

NetAcquire offers MissionView support for multiple operating systems: Windows and Linux.

MissionView works with or without a Web browser.

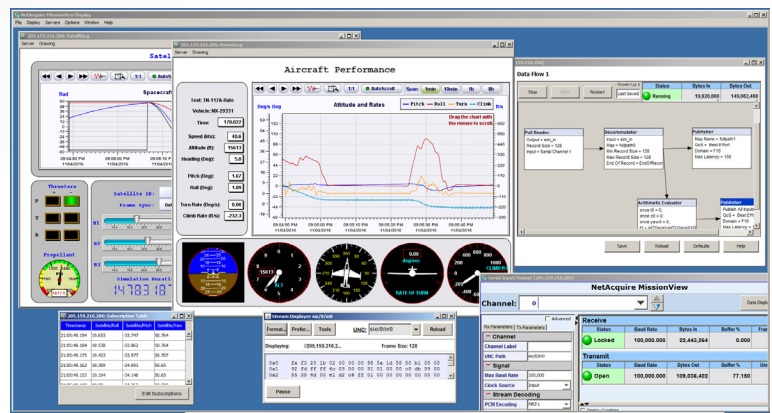
High-performance MissionView data processing and network communications utilize multiple PC processor cores.

## Integration with NetAcquire Data Flow

NetAcquire Data Flow Engine integration includes:

- Mathematical, filtering, and analysis functions
- Multi-level embedded decommutation
- Configurable time synchronization and time stamping
- CCSDS processing
- User-defined functions and derived parameters either with or without programming
- Hundreds of additional capabilities

Graphical configuration of real-time processing using NetAcquire Data Flow Designer



MissionView Display Desktop Manager

## In Development

### Video

- Combine NetAcquire video displays directly into MissionView

### Map Display

- Two and three dimensional dynamic mapping with built-in and configurable maps
- Configurable vehicle images on maps
- Optimized rendering of millions of points
- Raster, vector, and elevation data
- Rectangular and orthographic projections with unlimited layering
- Full alpha-blending, transparency, and dynamic attribute thresholding
- Optimized maps for both the whole globe and small region
- Hierarchical tiling, tile cache and automatic layers selection based on zoom thresholds

### Graphics Extensibility

- Develop additional display windows that plug directly into MissionView

### Cross-Vendor Support

- Integrated control and status of other Web-based instruments

## Solutions that Fit

NetAcquire Corporation specializes in real-time distributed systems. We can configure NetAcquire solutions that are customized to your network, input/output, and processing needs.



## NetAcquire Corporation

Phone 888-675-1122

Fax 888-670-1122

12000 115th Avenue N.E.

Kirkland, WA 98034

[www.netacquire.com](http://www.netacquire.com)